



Presbytery of Riverside

If it's urgent, it's included; if it's resourceful, it's EXTRA!

Leadership Update

Stated Clerk Reverend Tom Rennard

"I look forward to being a good parliamentarian, record keeper, and coach to clerks of sessions and the commissions, committees and teams of the presbytery. Exciting things are happening in the congregations, and this is where our focus as a presbytery needs to be."



[Read More](#)

Executive Presbyter Reverend Lee Ireland

Lee will be responsible for managing Presbytery staff, meeting with and serving as a resource to all committees and commissions, and interacting with other councils, agencies, the General Assembly, Synod and other presbyteries.

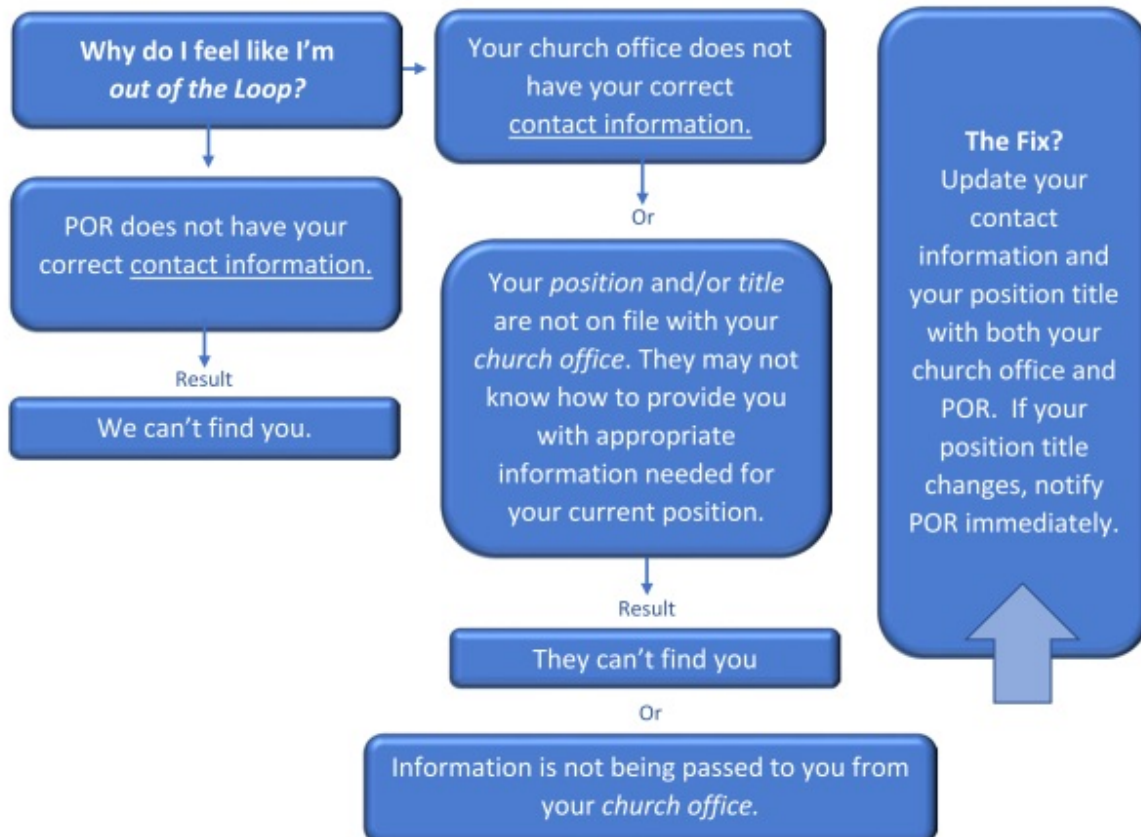
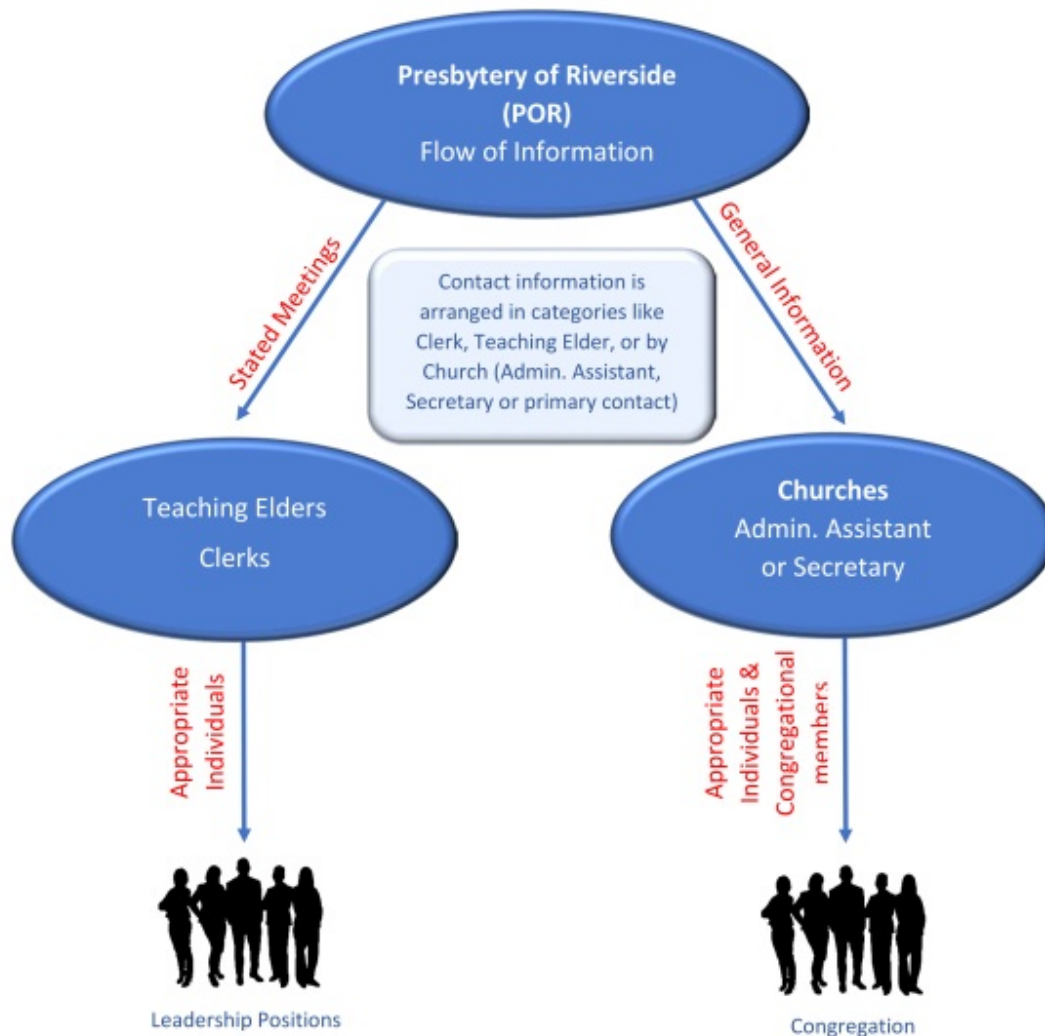


[Read More](#)

Are you in the loop?

Understanding how information flows from the Presbytery of Riverside will keep you

connected to vital and resourceful information. Locate your position on the flow chart and verify that there are no obstructions in your pathway of information.



Sexual Misconduct Training

Three Synod sponsored Sexual Misconduct Training's are scheduled as follows along with the locations. The hours will be from 9 am to 3 pm with lunch provided.

Boundary Training

Sexual Misconduct

Resources for Presbyterian Staff

Three Locations Available

September 5 (Thursday)

Union Church of Los Angeles
401 E 3rd St., Los Angeles, CA 90013
(213) 629-3876

September 6 (Friday)

Shepherd's Grove Presbyterian Church
4445 Alton Pkwy
Irvine, CA 92604
Phone: (949) 786-9627

September 7 (Saturday)

Emmanuel Presbyterian Church
588 Camino Manzananas, Thousand Oaks, CA 91360
Phone: (805) 498-4502



Dr. Kibble Ruth

works with congregations to establish safe relationships and faith communities, including prevention of child abuse, domestic violence, elder abuse, sexual harassment, professional misconduct and other abuses of power.

Kyros.org

Good News for Clergy Housing Allowance

After an appellate court ruled the clergy housing allowance to be constitutionally permissible in March, churches across the nation breathed a collective sigh of relief. For good reason. The allowance is the most valuable tax benefit to ministers who qualify for it. It's estimated to be worth nearly \$700 million a year, according to the congressional Joint Committee on Taxation.

[Continue Reading](#)

[More on Church Law](#)

Vacation Bible School

Where: First Presbyterian Church, Upland, CA

When: June 24-28, 5:30-8:00 pm

Theme: GIDDY-UP JUNCTION

Registration: children@fpc-upland.com or 404-456-7095

Various age groups: Contact Lonettia Sparks for more information

Registration fee \$10

Western-Cowboy theme

869 N. Euclid Ave Upland, CA 91786

July, 2019

Where: Grace Presbyterian Church, Temecula, CA

When: July 15-19, 9 am – noon

Theme: TO MARS AND BEYOND

Registration: gracepreschurch.net or 951-695-1913

Preschool - 5th grade

Registration fee \$20.00

Preschool open to first 15 registrations

31143 Nicolas Rd, Temecula, CA 92591

Where: Magnolia Presbyterian Church, Riverside, CA

When: July 15-19, 9 am – noon

Theme: SHINE!

Registration: church@magpres.com or 951-684-7200

7200 Magnolia Ave, Riverside, CA 92504

Where: First Presbyterian, Hemet, CA

When: July 8-12, 9 am - noon

Theme: John 3:16

Registration: hemetfpcsec@gmail.com or (951) 658-7153

515 E. Kimball Avenue, Hemet, CA 92543

2019 APA National Conference



"You shall be a crown of beauty in the hand of the Lord, and a royal diadem in the hand of your God." - Isaiah 62:3

Join us in the Queen City, Charlotte, North Carolina

October 23 - 25, 2019

[Download Brochure](#)



Visit our Website

[PCUSA](#)

[Rev. Tom Rennard](#)
Stated Clerk

[Rev. Lee Ireland](#)
Executive Presbyter

[Carrie Black](#)
Office Manager

[Kevin Bowers](#)
Communications

Presbytery of Riverside | RiversidePresbytery.com | 909 881-1595

